

102x41

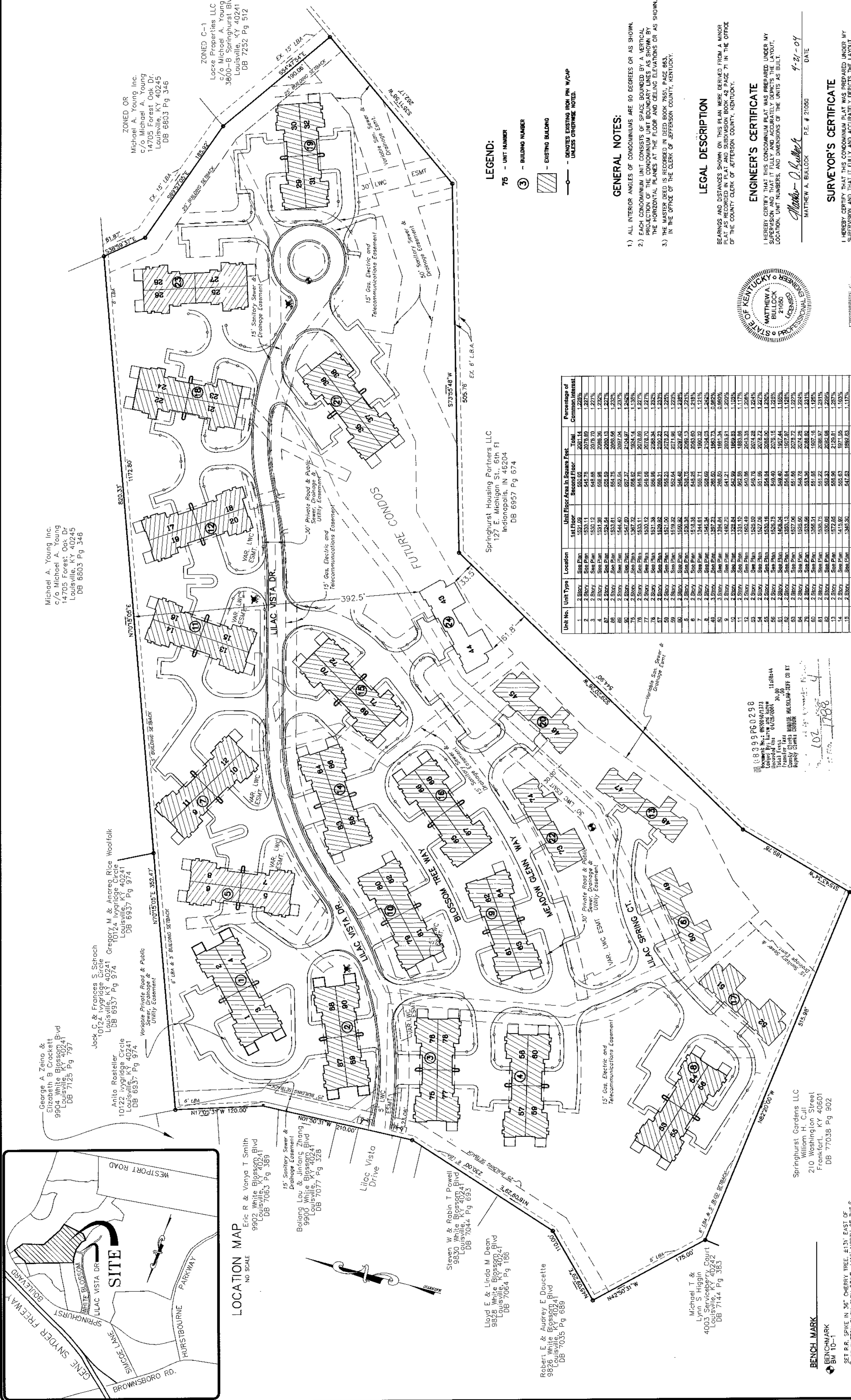
NO.	DATE	DESCRIPTION	BY

**BTR**  
 BIRCH, TRAUTWEIN & MIMS, INCORPORATED  
 Consulting Engineers Landscape Architects Planners  
 3001 Taylor Springs Drive  
 Louisville, Kentucky 40220  
 (502) 459-8402 Phone  
 (502) 459-8427 Fax

**CONDOMINIUM REGIME UNITS 43-44**  
 THE VILLAGE OF  
 SPRINGMEADOW CONDOMINIUMS  
 DEVELOPER:  
**MICHAEL A. YOUNG, INC.**  
 4000 Serviceberry Court  
 Louisville, Kentucky 40242  
 (502) 459-8548  
 4000 Serviceberry Court  
 Louisville, Kentucky 40242  
 FAX: ROCK WOOD, LOT 0132

**CONDOMINIUM REGIME UNITS 43-44**  
 THE VILLAGE OF  
 SPRINGMEADOW CONDOMINIUMS  
 FOR:  
**THE VILLAGE OF  
 SPRINGMEADOW CONDOMINIUMS**  
 DRAWING: **3000000043-44**  
 SCALE: **1"=60'**  
 SHEET **1** OF **2**

DATE: **03-28-04**  
 DRAWING: **3000000043-44**  
 SCALE: **1"=60'**  
 SHEET **1** OF **2**



**GENERAL NOTES:**  
 1) ALL INTERIOR ANGLES OF CONDOMINIUMS ARE 90 DEGREES OR AS SHOWN.  
 2) EACH CONDOMINIUM UNIT CONSISTS OF SPACE BOUNDED BY A VERTICAL PLANE, A HORIZONTAL PLANE, A HORIZONTAL PLANE AT THE FLOOR AND CEILING ELEVATIONS OR AS SHOWN ON THE HORIZONTAL PLANS AT THE FLOOR AND CEILING ELEVATIONS OR AS SHOWN.  
 3) THE MASTER DEED IS RECORDED IN DEED BOOK 7551, PAGE 653, IN THE OFFICE OF THE CLERK OF JEFFERSON COUNTY, KENTUCKY.

**LEGAL DESCRIPTION**  
 BEARINGS AND DISTANCES SHOWN ON THIS PLAN WERE DERIVED FROM A MINOR SURVEY OF THE PROPERTY BY JOHN CHARLES, SURVEYOR, IN 2004, AND FROM A SURVEY OF THE PROPERTY BY JOHN CHARLES, SURVEYOR, IN 2004, AND FROM A SURVEY OF THE PROPERTY BY JOHN CHARLES, SURVEYOR, IN 2004.

**ENGINEER'S CERTIFICATE**  
 I HEREBY CERTIFY THAT THIS CONDOMINIUM PLAT WAS PREPARED UNDER MY SUPERVISION AND IT FULLY AND ACCURATELY DEPICTS THE LAYOUT, LOCATION, UNIT NUMBERS, AND DIMENSIONS OF THE UNITS AS BUILT.

**SURVEYOR'S CERTIFICATE**  
 I HEREBY CERTIFY THAT THIS CONDOMINIUM PLAT WAS PREPARED UNDER MY SUPERVISION AND IT FULLY AND ACCURATELY DEPICTS THE LAYOUT, LOCATION, UNIT NUMBERS, AND DIMENSIONS OF THE UNITS AS BUILT.

DATE: **4-21-04**

My commission expires: **Jan 15, 2007**

The certification was sworn to before me by John Charles and Matthew A. Bullock of Birch, Trautwein & Mims, Inc. on the **21st** day of **April**, 2004.

My commission expires: **Jan 15, 2007**

**Mary S. Richardson**  
 Notary Public



Unit No.	Unit Type	Location	1st Floor Area in Square Feet	2nd Floor Area in Square Feet	Total Area in Square Feet	Percentage of Common Interest
1	2 Story	See Plan	1331.04	544.00	1875.04	1.227%
2	2 Story	See Plan	1331.04	544.00	1875.04	1.227%
3	2 Story	See Plan	1331.04	544.00	1875.04	1.227%
4	2 Story	See Plan	1331.04	544.00	1875.04	1.227%
5	2 Story	See Plan	1331.04	544.00	1875.04	1.227%
6	2 Story	See Plan	1331.04	544.00	1875.04	1.227%
7	2 Story	See Plan	1331.04	544.00	1875.04	1.227%
8	2 Story	See Plan	1331.04	544.00	1875.04	1.227%
9	2 Story	See Plan	1331.04	544.00	1875.04	1.227%
10	2 Story	See Plan	1331.04	544.00	1875.04	1.227%
11	2 Story	See Plan	1331.04	544.00	1875.04	1.227%
12	2 Story	See Plan	1331.04	544.00	1875.04	1.227%
13	2 Story	See Plan	1331.04	544.00	1875.04	1.227%
14	2 Story	See Plan	1331.04	544.00	1875.04	1.227%
15	2 Story	See Plan	1331.04	544.00	1875.04	1.227%
16	2 Story	See Plan	1331.04	544.00	1875.04	1.227%
17	2 Story	See Plan	1331.04	544.00	1875.04	1.227%
18	2 Story	See Plan	1331.04	544.00	1875.04	1.227%
19	2 Story	See Plan	1331.04	544.00	1875.04	1.227%
20	2 Story	See Plan	1331.04	544.00	1875.04	1.227%
21	2 Story	See Plan	1331.04	544.00	1875.04	1.227%
22	2 Story	See Plan	1331.04	544.00	1875.04	1.227%

Unit No.	Unit Type	Location	1st Floor Area in Square Feet	2nd Floor Area in Square Feet	Total Area in Square Feet	Percentage of Common Interest
23	2 Story	See Plan	1331.04	544.00	1875.04	1.227%
24	2 Story	See Plan	1331.04	544.00	1875.04	1.227%
25	2 Story	See Plan	1331.04	544.00	1875.04	1.227%
26	2 Story	See Plan	1331.04	544.00	1875.04	1.227%
27	2 Story	See Plan	1331.04	544.00	1875.04	1.227%
28	2 Story	See Plan	1331.04	544.00	1875.04	1.227%
29	2 Story	See Plan	1331.04	544.00	1875.04	1.227%
30	2 Story	See Plan	1331.04	544.00	1875.04	1.227%
31	2 Story	See Plan	1331.04	544.00	1875.04	1.227%
32	2 Story	See Plan	1331.04	544.00	1875.04	1.227%
33	2 Story	See Plan	1331.04	544.00	1875.04	1.227%
34	2 Story	See Plan	1331.04	544.00	1875.04	1.227%
35	2 Story	See Plan	1331.04	544.00	1875.04	1.227%
36	2 Story	See Plan	1331.04	544.00	1875.04	1.227%
37	2 Story	See Plan	1331.04	544.00	1875.04	1.227%
38	2 Story	See Plan	1331.04	544.00	1875.04	1.227%
39	2 Story	See Plan	1331.04	544.00	1875.04	1.227%
40	2 Story	See Plan	1331.04	544.00	1875.04	1.227%
41	2 Story	See Plan	1331.04	544.00	1875.04	1.227%
42	2 Story	See Plan	1331.04	544.00	1875.04	1.227%
43	2 Story	See Plan	1331.04	544.00	1875.04	1.227%
44	2 Story	See Plan	1331.04	544.00	1875.04	1.227%

102x20

102 x 41

102 x 41



102 x 5

102 x 5

102 x 5

NO.	DATE	DESCRIPTION	BY

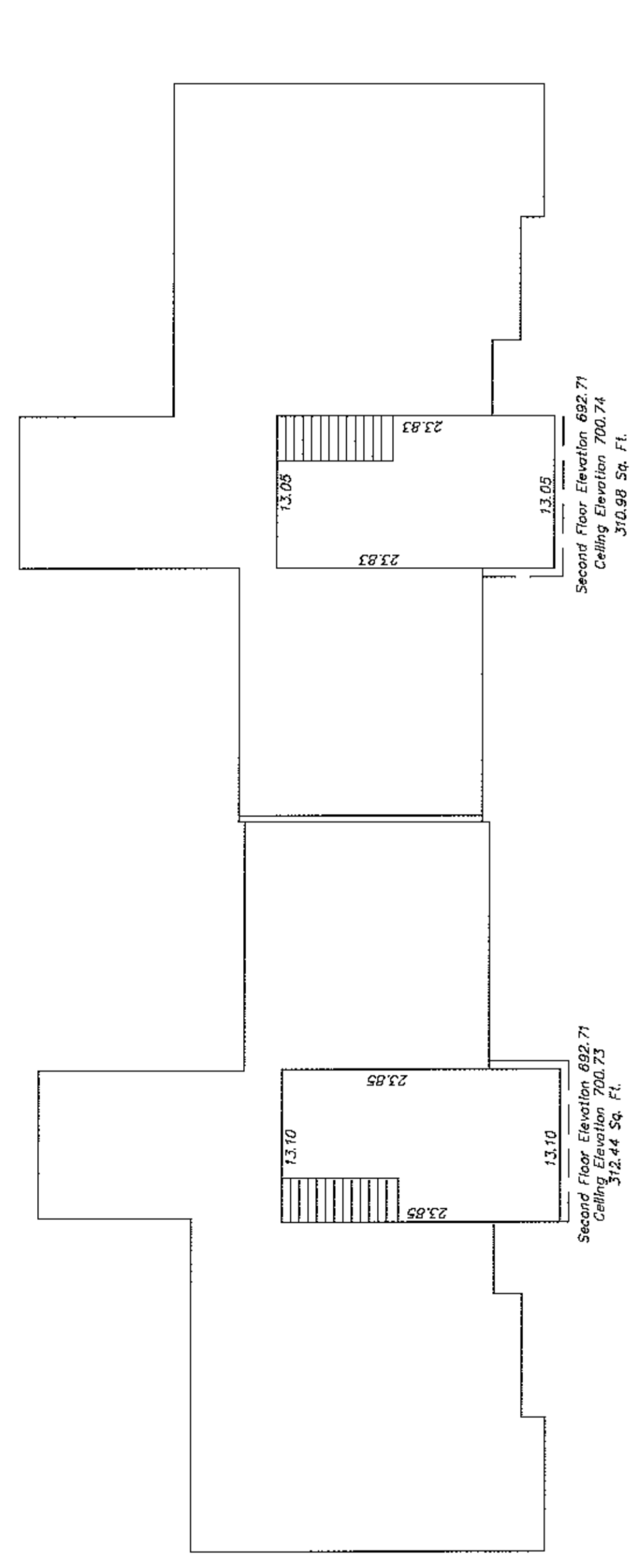
**BTR**  
 BIRCH, TRAUTWEIN & MIMS, INCORPORATED  
 Consulting Engineers Landscape Architects Planners  
 3001 Taylor Springs Drive  
 Louisville, Kentucky 40220  
 (502)-459-8402 Phone  
 (502)-459-8427 Fax

FOR: **THE VILLAGE OF SPRINGMADON**  
**CONDOMINIUM REGIME DUPLEX UNITS 43 & 44**

OWNER & DEVELOPER: **MICHAEL A. YOUNG, INC.**  
 5319 New Lakeside Circle  
 Louisville, Kentucky 40242  
 (502) 452-6546  
 DEED BOOK 6824 PAGE 335

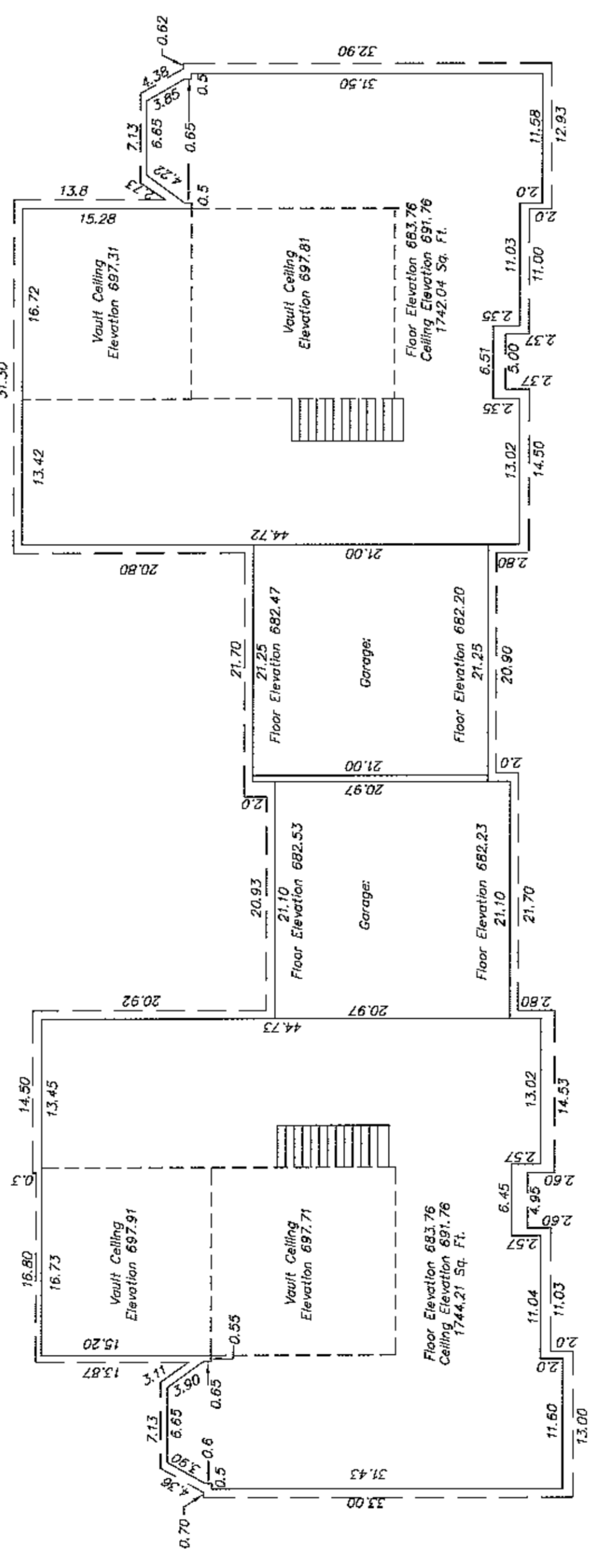
PROPERTY ADDRESS: **SPRINGMADON**  
 Louisville, Kentucky 40241  
 DEED BOOK 6824 LOT 335

DATE:	03-26-04
DRAWN BY:	JC/AB
CHECKED BY:	JC/AB
DRAWING NO.:	990020CP43-44FP
SCALE:	1"=10'
SHEET	2 OF 2



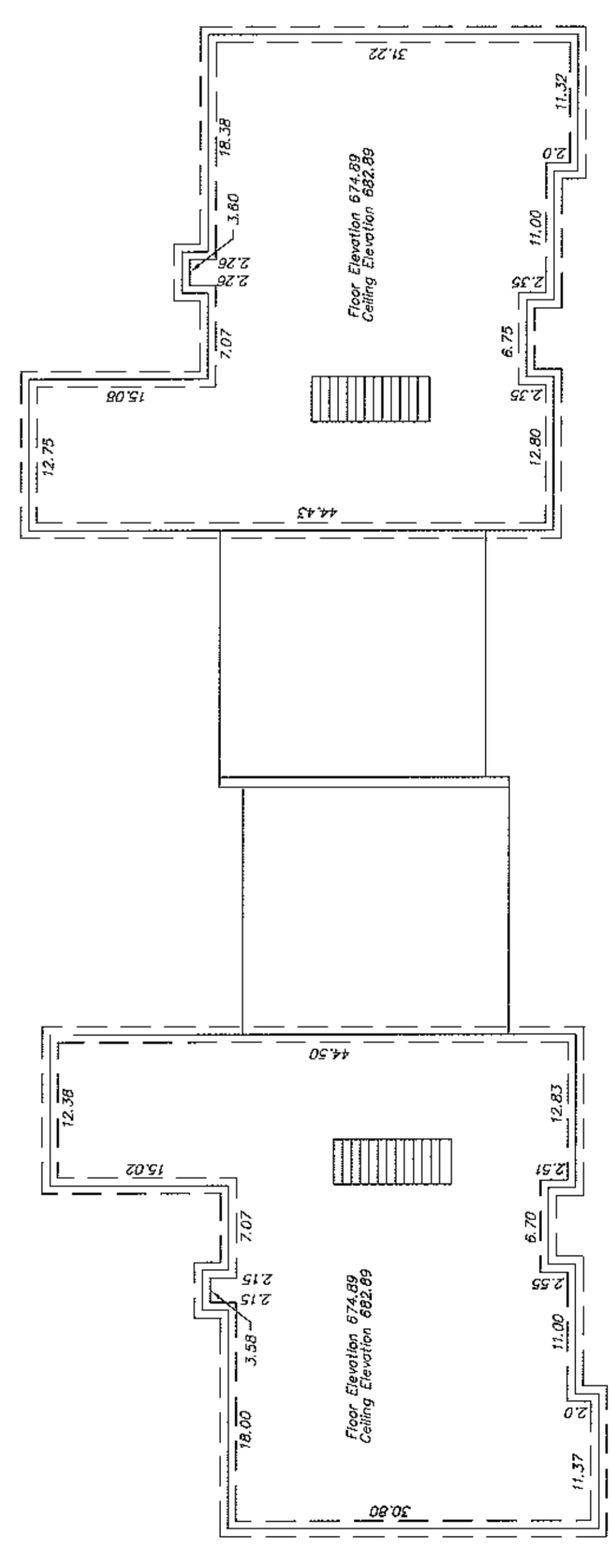
FRONT UNIT #43  
SECOND FLOOR

FRONT UNIT #44  
SECOND FLOOR



FRONT UNIT #43 (10214)  
FIRST FLOOR

FRONT UNIT #44 (10212)  
FIRST FLOOR



FRONT UNIT #43  
BASEMENT FLOOR

FRONT UNIT #44  
BASEMENT FLOOR

**LEGEND:**  
 [Symbol] DENOTES UNITED COMMON SPACE

**GENERAL NOTES:**

- 1.) ALL INTERIOR ANGLES OF CONDOMINIUMS ARE 90 DEGREES OR AS SHOWN.
- 2.) EACH CONDOMINIUM UNIT CONSISTS OF SPACE BOUNDED BY A VERTICAL PROJECTION OF THE CONDOMINIUM UNIT BOUNDARY LINES AS SHOWN BY THE HORIZONTAL PLANES AT THE FLOOR AND CEILING ELEVATIONS OR AS SHOWN.
- 3.) THE MASTER DEED IS RECORDED IN DEED BOOK 7651, PAGE 863, IN THE OFFICE OF THE CLERK OF JEFFERSON COUNTY, KENTUCKY.

**LEGAL DESCRIPTION**  
 BEARINGS AND DISTANCES SHOWN ON THIS PLAN WERE DERIVED FROM A MISOE PLAT AS RECORDED IN DEED BOOK 7651 AND SUBDIVISION BOOK 42, PAGE 71 IN THE OFFICE OF THE COUNTY CLERK OF JEFFERSON COUNTY, KENTUCKY.

**ENGINEER'S CERTIFICATE**  
 I HEREBY CERTIFY THAT THIS CONDOMINIUM PLAT WAS PREPARED UNDER MY PERSONAL SUPERVISION AND THAT I AM A LICENSED PROFESSIONAL ENGINEER IN THE LOCATION, UNIT NUMBERS, AND DIMENSIONS OF THE UNITS AS BUILT.  
 Matthew A. Bullock P.E. # 21050 4-21-04 DATE

**SURVEYOR'S CERTIFICATE**  
 I HEREBY CERTIFY THAT THIS CONDOMINIUM PLAT WAS PREPARED UNDER MY PERSONAL SUPERVISION AND THAT I AM A LICENSED PROFESSIONAL SURVEYOR IN THE LOCATION, UNIT NUMBERS, AND DIMENSIONS OF THE UNITS AS BUILT.  
 John Charles P.L.S. # 3152 4-21-2004 DATE

The certification was sworn to before me by John Charles and Matthew A. Bullock of Birch, Trautwein, & Mims, Inc. on the 21st day of April, 2004.  
 My commission expires: Jan. 15, 2007  
 Mary Ann Richardson Notary Public



Record No.: 990020CP43  
 Located in: Book 9900, Page 20  
 Total Pages: 20  
 Prepared by: MARIUS NUSLUP-JEFF DE BY  
 Property Clerk OSWMA



102 x 5